

ask 

Automation
Systeme
Komponenten



CONVEYOR SYSTEMS

To connect assembly stations and automatic stations in the production, we offer transfer systems as construction kit or including the complete installation. Of course also special solutions. Choose between manual conveyor systems or driven conveyor systems.

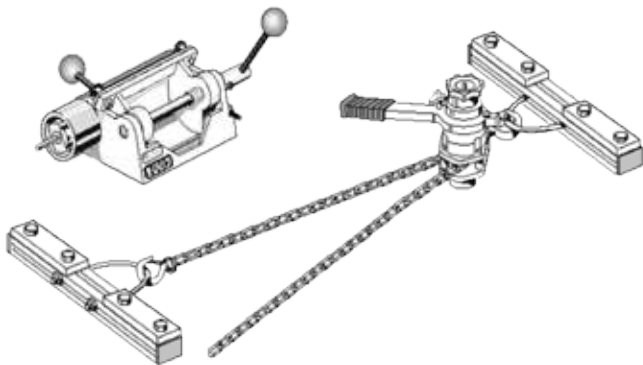




CONVEYOR SYSTEMS**PAGE**

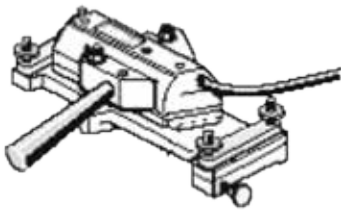
Additional heating press	5.2
Belt for conveyor units ESD	5.2
Belt welding device	5.2
Conveyor belts ECA	5.4
Example of assembly project: Belt conveyor system in combination	5.7
Example of assembly project: Driven roller tracks	5.7
Example of assembly project: Workpiece carrier system TS1	5.6
Example of assembly project: Workpiece carrier system TS2	5.6
Example of assembly project: Workpiece carrier system TS2	5.6
Fax form for the generation of quotations	5.5
Small conveyor belts according to customer wishes	5.7
Toothed belt for conveyor units	5.3
Toothed belt for conveyor units ESD	5.3





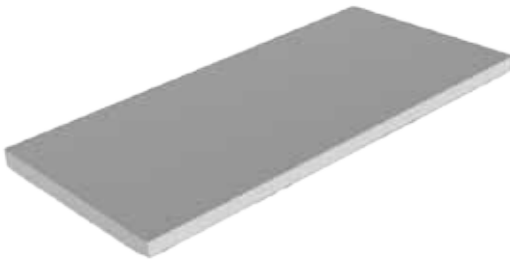
BELT WELDING DEVICE for workpiece carrier systems

	Article no.:	701020
Scope of supply	Clamping tool, grinding device, one heating press	



ADDITIONAL HEATING PRESS

	Article no.:	701030
Scope of supply	One heating press (welding process with 2 belts is significantly shortened)	



BELT FOR CONVEYOR UNITS ESD

Belt PA		Article no.:	701010
Dimensions	Width 30 mm, thickness 1,8mm supplied by the metre		
Scope of supply	Belt according to customer wishes, welding on site on request		

TOOTHED BELT FOR CONVEYOR UNITS

Toothed belt 25T5	Article no.:	701040
--------------------------	---------------------	---------------

Scope of supply	Toothed belt length according to customer wishes (green)
-----------------	----------------------------------------------------------



TOOTHED BELT FOR CONVEYOR UNITS ESD

Toothed belt ESD 25T5	 Article no.:	701050
------------------------------	-------------------------------------------------------------------------------------------------------	---------------

Scope of supply	Toothed belt length according to customer wishes (black)
-----------------	----------------------------------------------------------



Conductive material design per DIN EN 61340-5-1; suitable for use in ESD protected zones.





TYPE	DESCRIPTION	LENGTH (mm)	STANDARD WIDTHS (mm)	LOAD (kg)	SPEED (m/min)
EBS 40-D1	Direct drive Deflection 45 mm	500-8000	200,300,400,500,600	75	60
EBS-D2	Direct drive Deflection 15 mm	500-8000	200,300,400,500,600	50	60
EBS 40-I1	Indirekter Antrieb Deflection 45 mm	500-8000	200,300,400,500,600	75	60
EBS 40-I2	Indirekter Antrieb Deflection 15 mm	500-8000	200,300,400,500,600	50	60
EBS 40-M1	Direct central drive Deflection 45 mm	500-12000	200,300,400,500,600	100	60
EBS 40-M3	Direct central drive Deflection 45 mm Deflection 15 mm	500-12000	200,300,400,500,600	100	60
EBS 80-D1	Direct drive Deflection 85 mm	500-12000	600-800-1000,1200	150	60
EBS 80-I1	Indirect drive Deflection 85 mm	500-12000	600-800-1000,1200	150	60
EBS 80-M1	Direct central drive Deflection 85 mm	500-16000	600-800-1000,1200	150	60

EXAMPLES OF DRIVE VARIANTS

Fax no.: 09622 / 700 19 - 10

Direct drive



Indirect drive

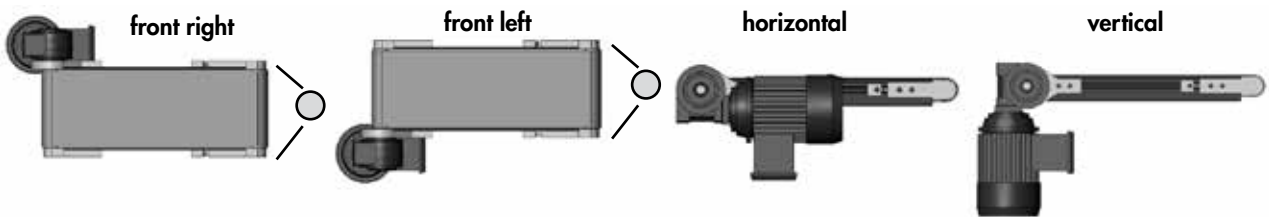


Direct central drive

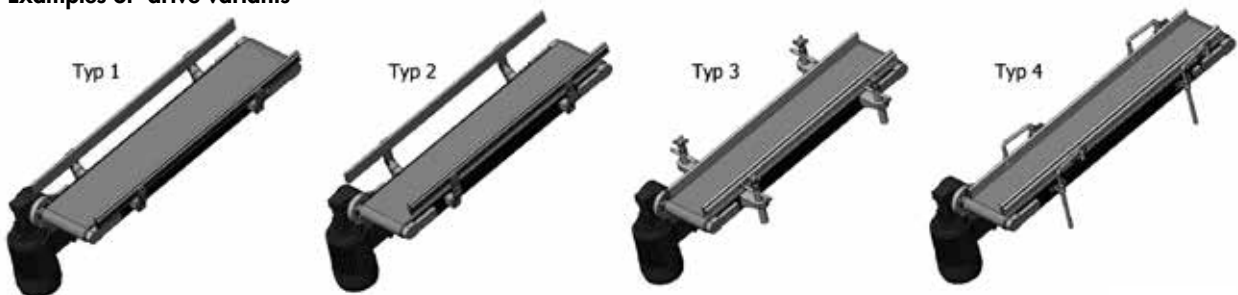


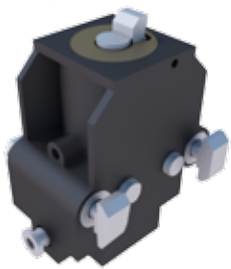
Contact details point of contact	
Company	
Name	
Tel.:	
Fax.:	
Email:	
Conveyor belt selection data	
Type	
Speed m/min	
Load kg/m	
Product material	
Belt width mm	
Queue length	
Poss. cycle time	
Drive variant	
Motor arrangement (B/F)	
Motor position (L/R)	
Support height (720-1010)	
Side guide width	
Side guide height	
Belt requirements	
Other	

Examples of the motor arrangement



Examples of drive variants





STOP GATE AS 1

(for e.g. TS 1)

(undamped)	Article no.: 701075
Application	Stops one or more accumulation workpiece pallets at the defined workpiece pallet stop surface
Scope of supply	- incl. mounting material for mounting on conveyor section - Pneumatic connection

Permissible accumulation load

WT (kg)	$v_N^{1)}$ (m/min)
80	6
80	9
60	12
40	15
40	18

¹⁾ permissible conveying speed



STOP GATE AS 1/D

(for e.g. TS 1)

(damped)	Article no.: 701076
Application	The AS 1/D stop gate ist used for conveying shock-sensitive parts
Scope of supply	- incl. mounting material for mounting on conveyor section - Pneumatic ellbow fitting (Quickfix)

Permissible accumulation load

WT (kg)	$v_N^{1)}$ (m/min)
12	6
10	9
10	12
10	15
8	18

¹⁾ permissible conveying speed



STOP GATE AS 2

(for e.g. TS 2)

(undamped)	Article no.: 701077
Application	The stop gate stops one or more accumulating workpieces at the defined workpiece pallet stop surface. In depressurised state the stop gate goes into a locked position via a spring and the workpiece carrier stops. Assembling within the tracks directly onto the the conveyor line.
Scope of supply	- incl. mounting material for mounting on conveyor section - Pneumatic parts

$m_G^{1)}$ (kg)	$v_N^{2)}$ (m/min)
200	6
140	9
100	12
70	15
50	18

¹⁾ permissible maximum mass workpiece carrier (aprox.)

²⁾ nominal speed (approx.)



- Pneumatic stop gate
- Clip stop gate; opening without attrition at the workpiece carrier stop surface
- Reversing mode not permissible
- Combineable with WT 2/E, WT 2 and WT 2/F

STOP GATE AS 2/D-60

(for e.g. TS 2)

$m_G^{1)}$ (kg)	$v_N^{2)}$ (m/min)
60	6
40	9
35	12
30	15
30	18
24	24

¹⁾ permissible maximum mass workpiece carrier (aprox.)

²⁾ nominal speed (approx.)

(damped)

Article no.: 701078

Application Damped stopping of the first accumulating workpiece carrier. The stop gate stops one or more accumulation workpiece carriers at the defined workpiece carrier stop surface. In depressurised state the stop gate goes into a locked position via a spring and the workpiece carrier stops. Assembling within the tracks directly onto the the conveyor line.

Scope of supply - incl. mounting material for mounting on conveyor section

- Pneumatic stop gate
- Optimal attenuation at total mass of the workpiece carrier up to 60 kg
- Attenuation steplessly adjustable
- Combineable with WT 2/E, WT 2 and WT 2/F



STOP GATE AS 2/D-150

(for e.g. TS 2)

$m_G^{1)}$ (kg)	$v_N^{2)}$ (m/min)
150	6
120	9
110	12
100	15
100	18
55	24
35	30

¹⁾ permissible maximum mass workpiece carrier (aprox.)

²⁾ nominal speed (approx.)

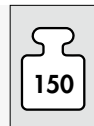
(damped)

Article no.: 701079

Application Damped stopping of the first accumulating workpiece carrier. The stop gate stops one or more accumulation workpiece carriers at the defined workpiece carrier stop surface. In depressurised state the stop gate goes into a locked position via a spring and the workpiece carrier stops. Assembling within the tracks directly onto the the conveyor line.

Scope of supply - incl. mounting material for mounting on conveyor section

- Pneumatic stop gate
- Very sturdy all-metal version with double piston attenuator
- Attenuation steplessly adjustable
- Short damping path (20mm), short damping time, short assembly dimension
- Combineable with WT 2 und WT 2/F



STOP GATE AS 2/D-200

(for e.g. TS 2)

$m_G^{1)}$ (kg)	$v_N^{2)}$ (m/min)
200	6
140	9
100	12
100	15
100	18
55	24
35	30

¹⁾ permissible maximum mass workpiece carrier (aprox.)

²⁾ nominal speed (approx.)

(damped)

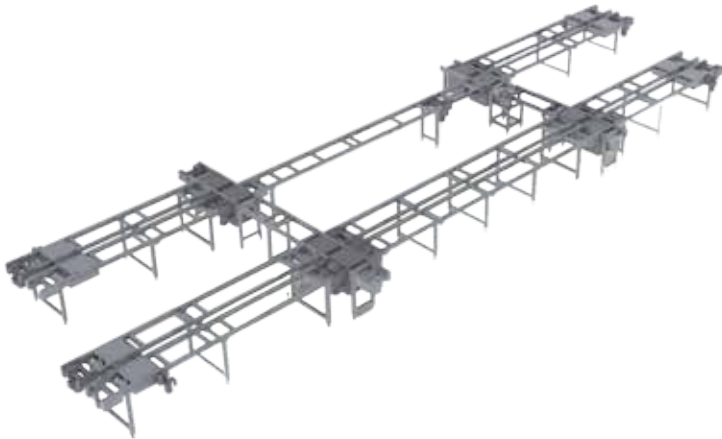
Article no.: 701080

Application Damped stopping of the first accumulating workpiece carrier. The stop gate stops one or more accumulation workpiece carriers at the defined workpiece carrier stop surface. In depressurised state the stop gate goes into a locked position via a spring and the workpiece carrier stops. Assembling within the tracks directly onto the the conveyor line.

Lieferumfang - incl. mounting material for mounting on conveyor section
- pneumatic parts

- Pneumatic stop gate
- Attenuation steplessly adjustable
- Optimal attenuation at total mass of the workpiece carrier between 50 und 200 kg
- Combineable with WT 2 and WT 2/F





WORKPIECE CARRIER SYSTEM TS2

Equipment Workpiece carrier size 320x240mm
lateral transport EQ2/T or EQ2/TR
conveyor support



WORKPIECE CARRIER SYSTEM TS2

Equipment Workpiece carrier size 480x640mm
lateral transport EQ2/T
conveyor support



WORKPIECE CARRIER SYSTEM TS1

Equipment Workpiece carrier size 80x80mm,
lateral transport EQ21/TR

SMALL CONVEYOR BELTS

Equipment

Aluminium conveyor profile
belt according to customer wish



DRIVEN ROLLER TRACKS

Equipment

With outward transfer
manual and driven



BELT CONVEYOR SYSTEM IN COMBINATION

Equipment

Belt conveyor system combined
with driven roller tracks

